



FD-8-1000W LED GROW LIGHT

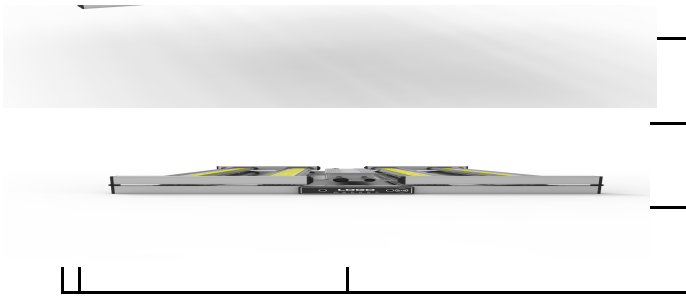
INSTRUCTION MANUAL



1. Picture of products


Product and recommended application



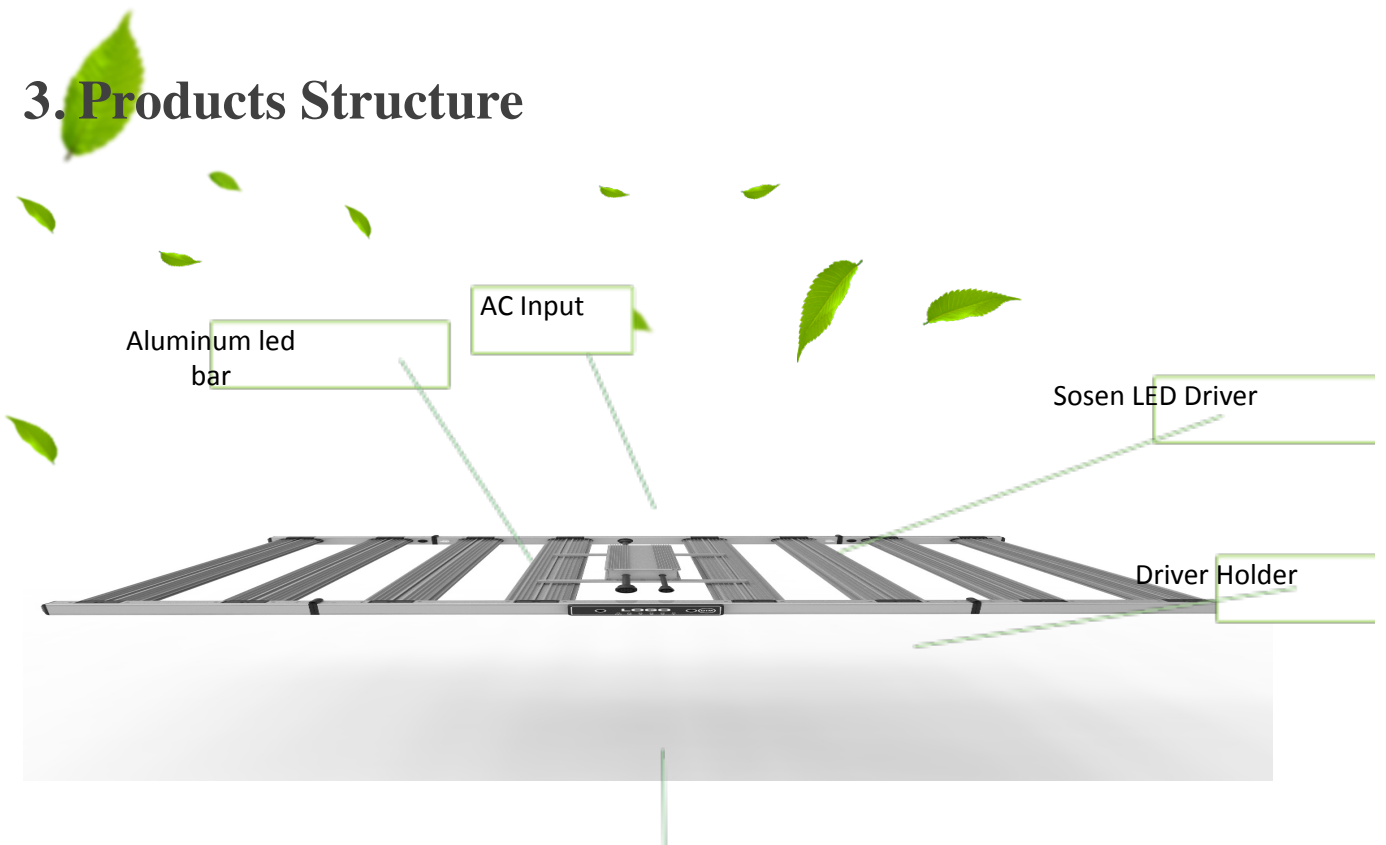


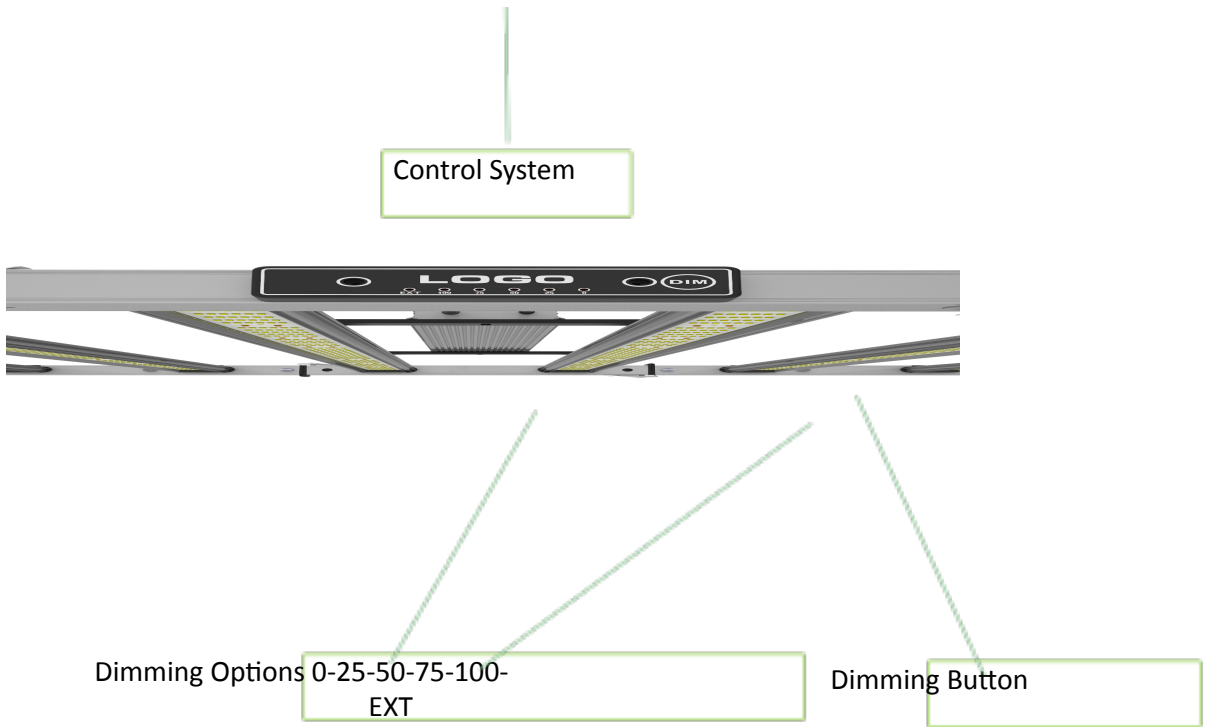
2. Delivery Contents

- 1x 1000w LED Fixture
- 1x LED Driver
- 1x Power Cable
- 1x 3m Long Extension Cable
- 2x Adjustable Hanging Kits
- 2x un-adjustable Hanging Kits

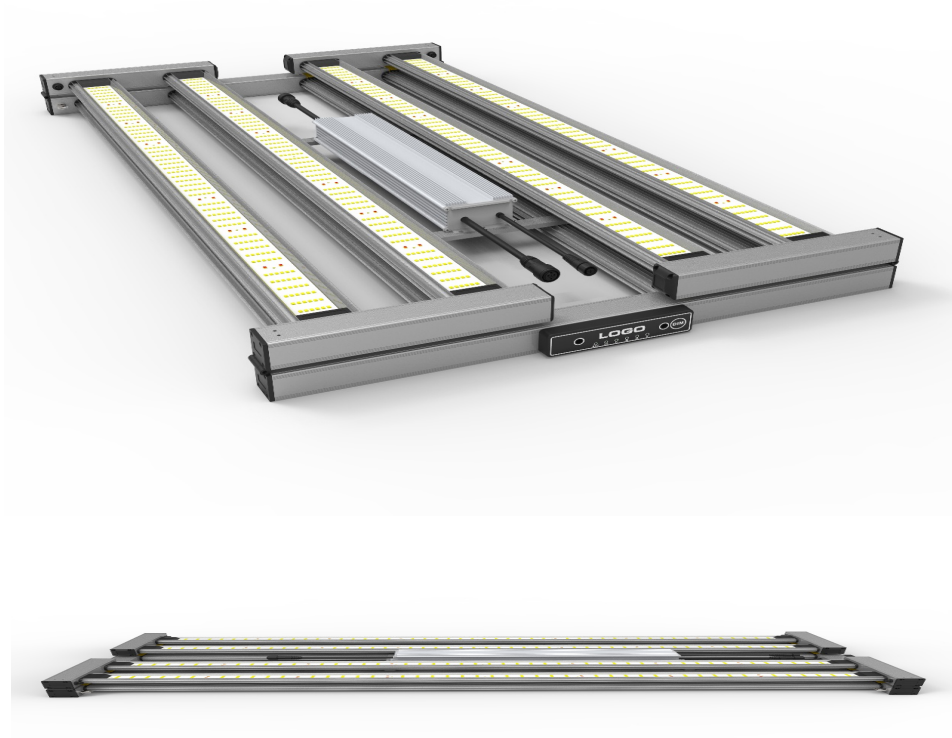
 Please keep the instruction manual and desist from throwing it away. It might come in handy with future troubleshooting.

3. Products Structure

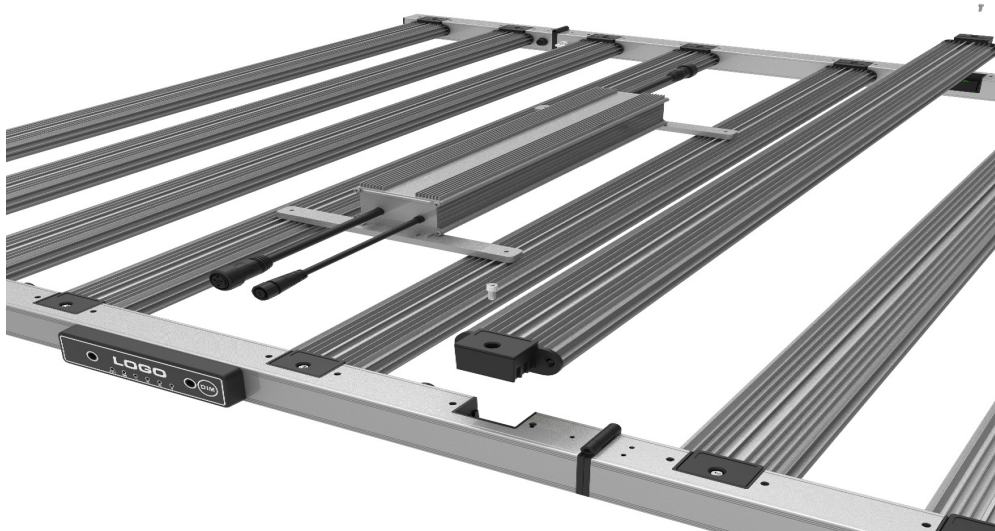




Foldable:



Easy Replacement:

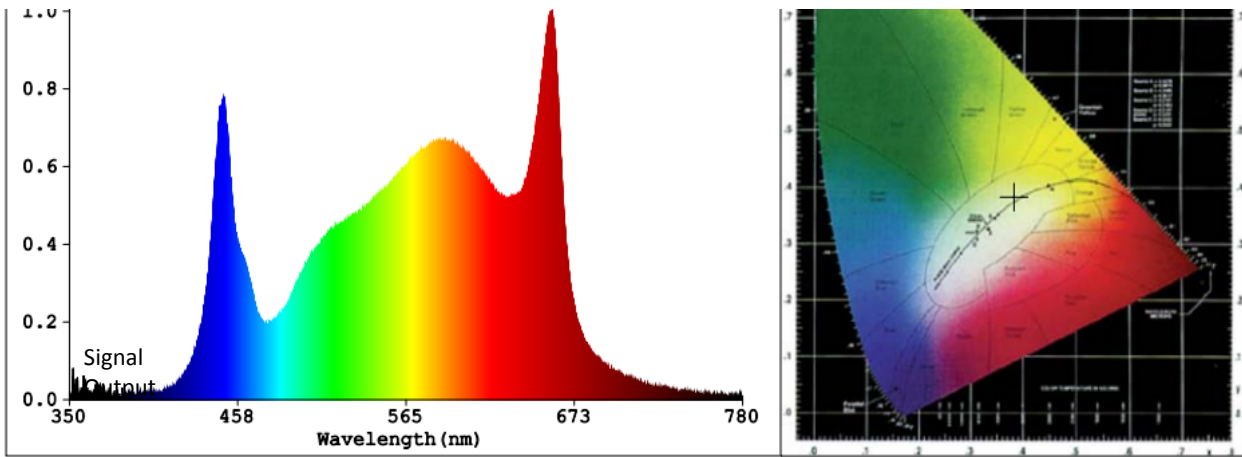


4. Product Datasheet

Model	Product Specification
Model	FD-8-1000w
Power Consump.	1000w \pm 5%
Power Supply	Sosen LED Driver
AC Input	AC 180-305V 50/60 Hz
Light Source	Samsung SMD2835 x 4096pcs 4000K LED + 3w SMD3535 x 192pcs 660nm
PPF	2900 μ mol/s
Efficacy	2.9 μ mol/J
LED Spectrum	Full Spectrum
Dimension	1100*1100*90mm
N.W./G.W.	18kg/20kg
Power Factor	>0.9
Control	Manual Dimming and external control with CTLite LED Controller
Daisy-Chain	Support Daisy-Chain Controlling via LED Controller
Beam Angle	120 Degree
Working Temp.	-20°C to 35°C
Warranty	5 Years

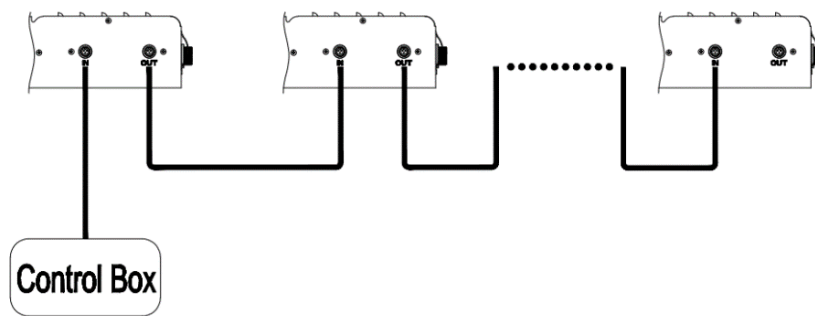
4.2 Spectrum





5. Daisy-China Control

Control Diagram:



⌋ Timer setting, Over Temp. Protection

⌋ For Large Application up to 252 units

⌋ Dimming Control

⌋ Perfect Simulation of Sunrise and Sunset


6. Preparation

• Transportation

Improper transportation may harm or can even cause damage to LED lamp and power housing box). In case of obvious damage or incomplete scope of supply, please refer to your vendor and Haulage company immediately.

• Unboxing

Please handle and unbox the LED lamp with care! Check the delivery contents for completeness first. A detailed list of the product range is contained on the inner cover in this manual.

 hough transport or due to a long storage time, the LED-modules might get a little polluted. Therefore we recommend to clean the modules before each use with a dry and soft tissue.

7. Operation

7.1 Safety measures & precaution





Warning! This LED fixture is powered with electricity (AC110-277V)! To prevent injury, we ask you to desist from improper use!

- Never open the case of the device! Health hazards await the consumer and the warranty of the device expires.

7.2 Putting into service

Operate the LED fixture only horizontally, while hanging or slightly angled (approx. about 20°). Deploy the LED lamp fixture about 30-60cm above the top of the plants;

7.3 Proper use

Do not use the LED fixture vertically or as illumination device upside-down (direct eye contact and long exposure over time may cause permanent damage to your eyesight!).

We don't advise you to deploy the device as a room illuminant. It is exclusively designed and developed for plant breeding, cultivation and hibernation. Please ensure that the LED fixture is being operated out of sight and out of reach of children and animals to protect their eyes!